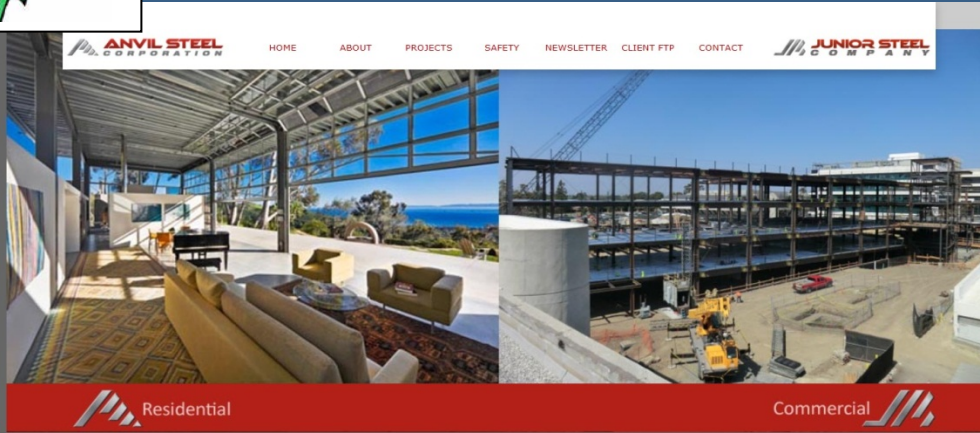




December 2012



ANVIL STEEL
CONSTRUCTION STARTS on
the NEW CRANE BAY

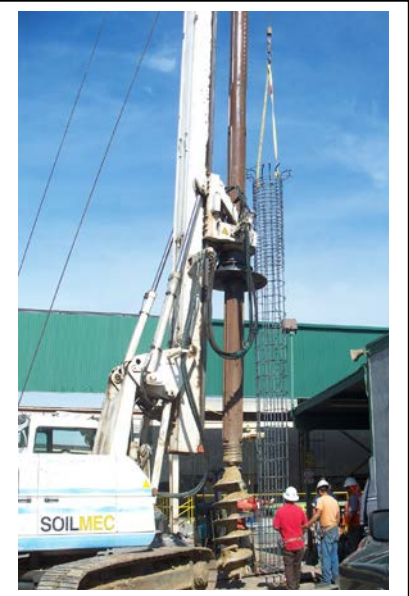
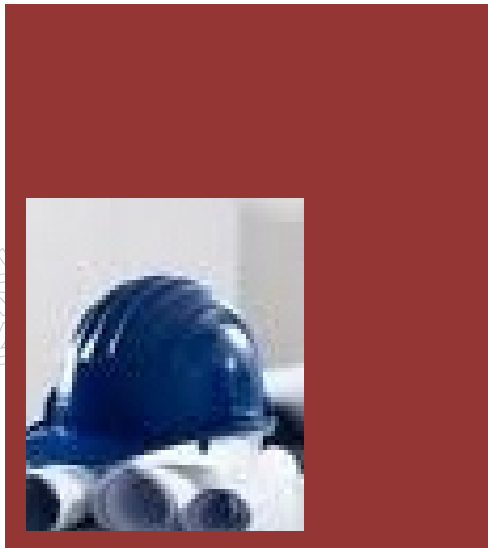
- Completion February 2013
- Two new 5 Ton bridge hoists
- 1,200 Additional AMP supply
- 40 % increase in tonnage output

ANVIL JUNIOR LAUNCHES NEW WEBSITE FOR 2013

Our New Website features

Easy to use navigation including current and completed project photos and contact page with Google mapping. Both our Residential and Commercial companies are easy to tour with our split screen short cut menus. The client ftp site offers our customer a powerful communication tool needed for sharing large files. Come visit our site and download a qualification page in seconds with the icon provided at the bottom of the page.

Paul Schifino President



Tom Tometich is managing the project and has drilled the caissons while Edison adds more power.

Happy holidays from our family to yours!



The Anvil Junior team wants to wish you and your family a very warm and peaceful holiday. We are grateful for our employees and customers who helped make 2012 an extraordinary year.



22/09/2012